



Mayfield, Limes Close, Liphook, Hampshire GU30 7SL
Price Guide £750,000 Freehold

CLARKE  GAMMON

MAYFIELD LIMES CLOSE
LIPHOOK HAMPSHIRE GU30 7SL

Price Guide £750,000

Triple aspect living room with
open fireplace

Adaptable layout

Three/four bedrooms

Large westerly facing rear
gardens

Further scope to amend and
improve

Spacious garage with
additional driveway parking

Sought-after village location

Lovely walks nearby

Two/three reception rooms

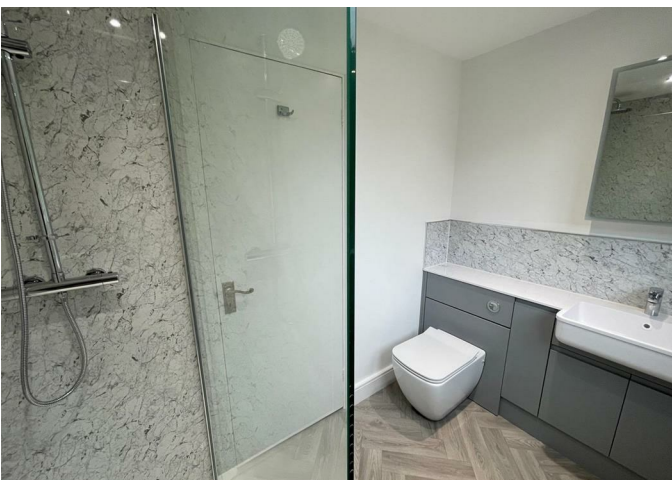
Chain free sale



**Family house in a much sought-after
no through road, in the picturesque
village of Bramshott, yet under 1 mile
from A3 access and close to Liphook
village centre.**

THE PROPERTY

Offered for sale on a chain free basis, this appealing and spacious family house offers exciting scope to modernise, improve and extend subject to planning. The accommodation is clean and tidy throughout, although in need of updating and features a particularly impressive living room which is triple aspect with an open fireplace and sliding patio doors to the rear garden. The dining room, which again features patio doors to the garden is ideally located to open up to the kitchen, offering scope to provide an impressive kitchen/family room. The ground floor study can be utilised as a fourth bedroom. Upstairs, there are three good size bedrooms including a master bedroom with an en-suite bathroom in addition to the further family bathroom.



THE GROUNDS

To the front of the property, there is a driveway leading to a large garage with up and over door, light and power and rear personal door to the rear garden. The gardens at the front are laid mostly to lawn with well-stocked borders, front wall and wrought-iron gates to the driveway. Side access leads to the rear which has a large, paved patio leading to an extensive area of lawn, again with well-stocked borders and offering a lovely outlook to the rear.

SITUATION

Limes Close is a much sought-after cul-de-sac set close to the historic centre of Bramshott village. Bramshott lies just north of the A3 interchange and within one and a half miles of Liphook village centre and is renowned for its many attractive cottages and the historic St Marys Church with its Canadian war graves. Liphook itself provides an excellent range of facilities which include a large Sainsbury's supermarket, the Living Room Cinema, many independent shops, Lloyds bank and leisure and recreational facilities. There are many miles of good walks nearby, many of which are in National Trust owned land or The South Downs National Park. There is also a fine selection of restaurants and pubs. The mainline railway station at Liphook offers services to London and Portsmouth.

Liphook village centre – 1.1 mile

Liphook mainline station - 1.6 miles

A3 Junction – ½ a mile

Haslemere – 5.1 miles

Guildford – 18.1 miles

Portsmouth – 28.1 miles

M25 Junction at Wisley – 24.1 miles

*All distances are approximate.

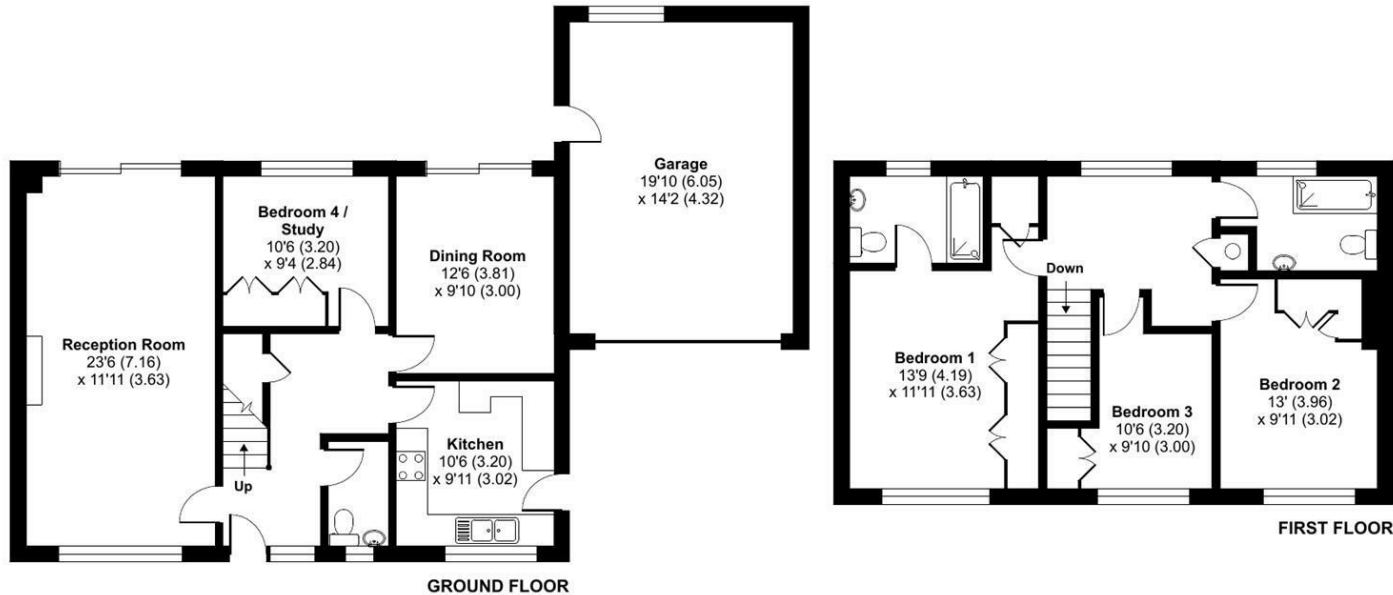
Limes Close, Bramshott, Liphook, GU30

Approximate Area = 1451 sq ft / 134.7 sq m

Garage = 280 sq ft / 26. sq m

Total = 1731 sq ft / 160.8 sq m

For identification only - Not to scale



Floor plan produced in accordance with RICS Property Measurement Standards incorporating International Property Measurement Standards (IPMS2 Residential). © nichecom 2023. Produced for Clarke Gammon. REF: 927744

LOCAL AUTHORITY

East Hampshire District Council

COUNCIL TAX

Band F

SERVICES

All mains services

20th January 2025

Energy Efficiency Rating

	Current	Potential
Very energy efficient - lower running costs		
(92 plus) A		
(81-91) B		
(69-80) C	74	85
(55-68) D		
(39-54) E		
(21-38) F		
(1-20) G		
Not energy efficient - higher running costs		
England & Wales	EU Directive 2002/91/EC	

CG LIPHOOK OFFICE

2 MIDHURST ROAD, LIPHOOK, HAMPSHIRE, GU30 7ED

T: 01428 728900

E: liphook.sales@clarkegammon.co.uk

clarkegammon.co.uk

DIRECTIONS

From the centre of Liphook take the London Road out of the village proceeding over the A3 and turning left into Church Road proceed past St Mary's church following the road as it bears round to the right where Limes Close will be found on the left-hand side. Once in Limes Close the property will be found on the right-hand side.

AGENT'S NOTE

Whilst we endeavour to make our sales particulars accurate and reliable, we wish to inform prospective purchasers that we have not carried out a detailed survey, nor tested the services, appliances and specific fittings. If there is any point which you would like to have further clarification upon, please contact this office.

ESTATE AGENTS CHARTERED SURVEYORS VALUERS LETTINGS AUCTIONEERS

GUILDFORD OFFICE
T: 01483 880 900

HASLEMERE OFFICE
T: 01428 664 800

LIPHOOK OFFICE
T: 01428 728 900

MAYFAIR OFFICE
T: 0870 112 7099

AUCTION ROOMS
T: 01483 223101

