



**Flat 8, Chapman House, Meadway, Haslemere, Surrey**  
**Leasehold**

CLARKE  GAMMON  
1919

## 8, CHAPMAN HOUSE MEADWAY HASLEMERE SURREY GU27 1FN

Bespoke apartments  
individually designed

Excellent transport links  
nearby

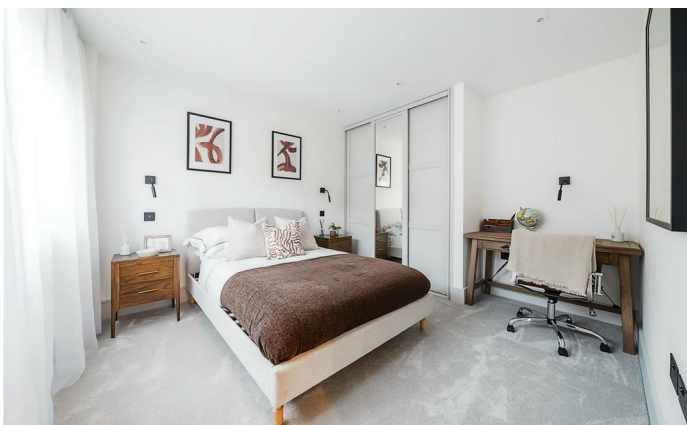
External storage rooms

Underfloor heating

Outstanding specification

Allocated parking with  
provision for electric vehicle  
charging points

Surrounded by spectacular  
countryside



### THE PROPERTY

A collection of just TWENTY contemporary one and two bedroom bespoke apartments individually designed and finished to an outstanding specification.

Flat 8 is a forward facing elevation one bedroom modern flat. The kitchen is a matt lacquer German kitchen from Nobilia including matt black bar handles, under cabinet lighting, quartz worktops, a matt black single lever tap and cutlery drawer included. Visible appliances include: - Bosch single oven, microwave and induction hob whilst integrated appliances include :- Indesit fridge/freezer and dishwasher. There is oak effect LVT flooring in the hallway, kitchen & living space, luxury carpet in the bedrooms and marble effect porcelain tiles in the bathroom. There is an audio intercom with door release, allocated lockable letterboxes by the main entrance, a communal disability lift, main staircase, external storeroom, contemporary matt black socket/switch plates and LED downlighting. Underfloor heating covers all areas with the bathroom benefitting from a towel radiator.

**\*\*Images are for illustrative purposes only and may include different images\*\***

Annual Service charge £1,005.00

Storage Unit Rental £145 Per year (First 2 Years Free)

200 Year Lease, Peppercorn Ground Rent.

EV charging point installation (£750-£1000)





## THE GROUNDS

Allocated parking space  
Charging Points  
Visitor Parking Bays

## LEASEHOLD DETAILS

Annual Service charge £1,005.00  
Storage Unit Rental £145 annual (first 2 years free)  
200 year lease, peppercorn ground rent  
EV charging point installation (£750-£1000)

## SITUATION

With one of the National Trust's oldest countryside acquisitions Marley Common on its doorstep, these luxury homes in Haslemere present a unique opportunity to experience a modern-day lifestyle in a mature setting. Situated a 15 minute stroll from the mainline train station with fast journeys to London Waterloo in 50 minutes and just a few miles from the A3. Chapman House benefits from great transport links, a vibrant community as well as a wide choice of national walking trails and safe cycling routes.

Haslemere is a historic market town in the South of Surrey, surrounded by spectacular countryside, one of the gems of the Surrey Hills Area of Outstanding Natural Beauty. There is a wide variety of independent shops, cafes, pubs and restaurants suiting all tastes and pockets. Two superstores can be found in town (Waitrose in the High Street and Tesco on Wey Hill). The A3 dual carriageway at Hindhead provides great connections to Portsmouth and Guildford, as well as to the M25 at Wisley (junction 10) to Heathrow and Gatwick airports.

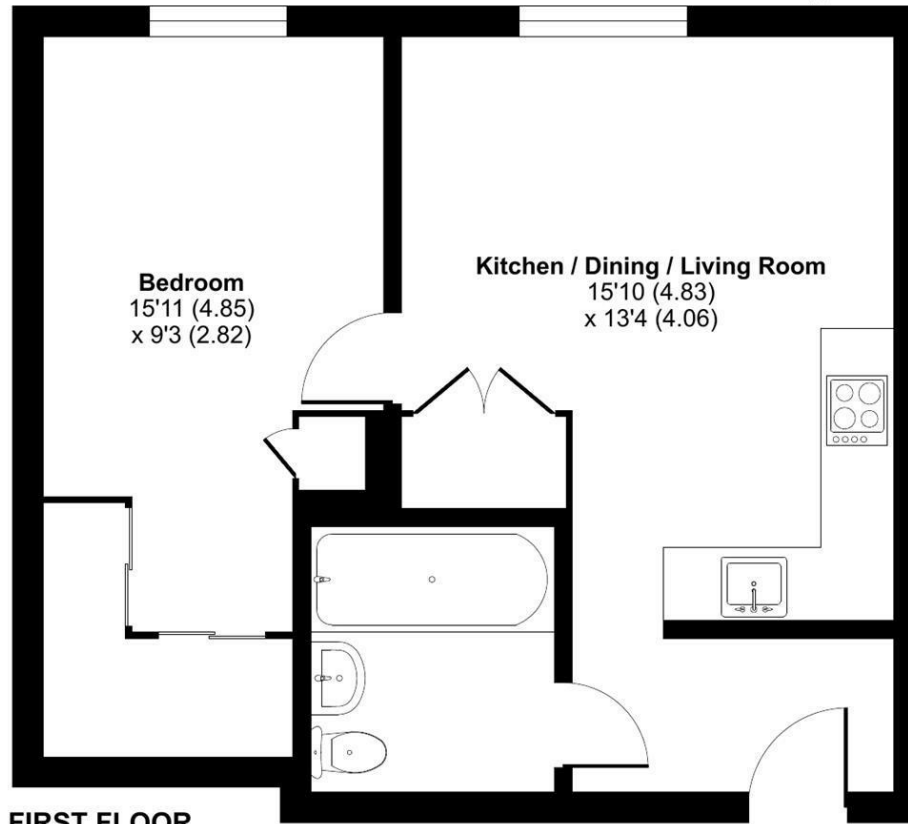
Shops and amenities in Weyhill 0.3 miles  
Main line station 0.8 miles  
High Street 1.3 miles  
A3 access at Hindhead 3 miles  
Guildford 17 miles

All distances approximate

# Chapman House, Meadway, Haslemere, GU27

Approximate Area = 465 sq ft / 43.1 sq m

For identification only - Not to scale



FIRST FLOOR

Floor plan produced in accordance with RICS Property Measurement 2nd Edition, Incorporating International Property Measurement Standards (IPMS2 Residential). © n°cheom 2025. Produced for Clarke Gammon, REF: 1241532

## LOCAL AUTHORITY

Waverley

## COUNCIL TAX

Band New Build

## SERVICES

Mains water, electricity, mains drainage  
electric underfloor heating

13th March 2025

Energy Efficiency Rating		
	Current	Potential
Very energy efficient - lower running costs		
(92 plus) <b>A</b>		
(81-91) <b>B</b>		
(69-80) <b>C</b>	<b>77</b>	<b>77</b>
(55-68) <b>D</b>		
(39-54) <b>E</b>		
(21-38) <b>F</b>		
(1-20) <b>G</b>		
Not energy efficient - higher running costs		
<b>England &amp; Wales</b>	EU Directive 2002/91/EC	

## CG HASLEMERE OFFICE

72 HIGH STREET, HASLEMERE, SURREY, GU27 2LA

T: 01428 664800

E: haslemere.sales@clarkegammon.co.uk

[clarkegammon.co.uk](http://clarkegammon.co.uk)

## AGENT'S NOTE

Whilst we endeavour to make our sales particulars accurate and reliable, we wish to inform prospective purchasers that we have not carried out a detailed survey, nor tested the services, appliances and specific fittings. If there is any point which you would like to have further clarification upon, please contact this office.

ESTATE AGENTS CHARTERED SURVEYORS VALUERS LETTINGS AUCTIONEERS

GUILDFORD OFFICE  
T: 01483 880 900

HASLEMERE OFFICE  
T: 01428 664 800

LIPHOOK OFFICE  
T: 01428 728 900

MAYFAIR OFFICE  
T: 0870 112 7099

AUCTION ROOMS  
T: 01483 223101

